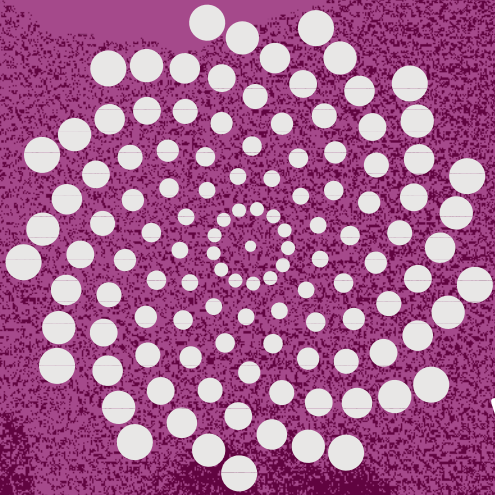


# Natural Protectant Bio-Fungicide

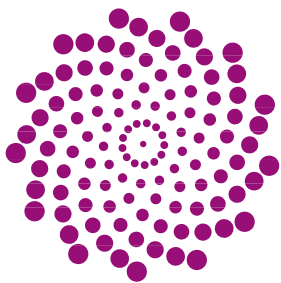


**vinevax**<sup>TM</sup>

**Living barrier protection  
for pruning wounds**



**“Acts fast, penetrates readily, inoculates wounds from one season to the next.”  
RECOMMENDED FOR ALL PRUNING CUTS IN VINES**



# vinevax™

## Pruning wound dressing



### What is Vinevax?

Vinevax is a registered pruning wound dressing that contains a unique high-activity blend of Trichoderma bio-inoculant which quickly colonizes and closes pruning wounds to airborne Eutypa ascospores.

Vinevax is the synthesis of more than 25 years work in New Zealand and Australia, harnessing the wood inoculation and protective properties of the naturally occurring Trichoderma fungi first identified in Europe 40 years ago. The Vinevax proprietary formulation of essential nutrients and promoters combined with this unique high activity bio-inoculant enables spray delivery to pruning wounds with effective and safe farm performance.

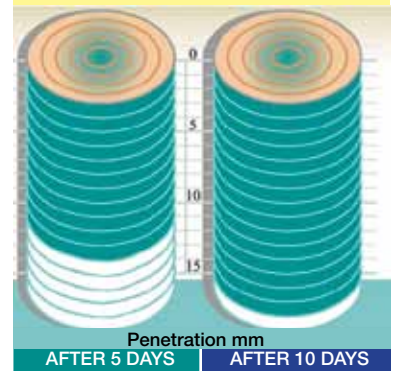
### How does Vinevax work?

Termed an 'immunising commensal' the Vinevax active ingredient enters the fresh wound tissue and establishes a living barrier that simultaneously protects against and consumes invading pathogens, and continues to live beneficially within the plant - its reassuring to know that Vinevax is non-toxic and organic.

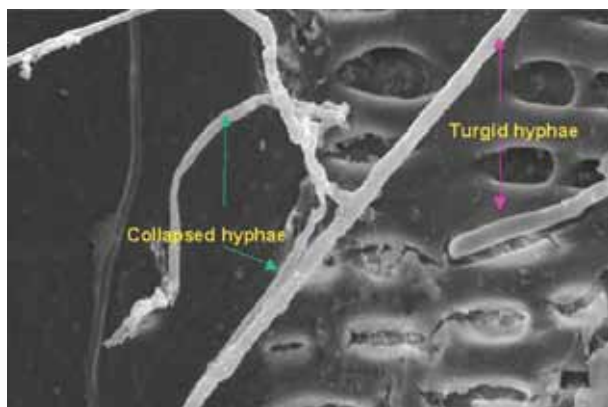
- Fast acting protective living barrier wound dressing
- Closes pruning wounds to invasion by Eutypa
- Protective zone builds over multiple seasons in the vine tissue

### Vinevax protects your valuable vines from pruning wound infection by Eutypa lata - dying arm disease of grape vines

#### BIO-INOCULANT PENETRATION & PROTECTION IN WOUND



Increasing depth of colonisation by Vinevax bio-inoculant after treatment. I. Harvey, Plantwise Lincoln



Microscopic view of turgid and collapsed hyphae in a xylem vessel in cuttings co-inoculated with E.lata and Vinevax bio-inoculant. S. John, Adelaide University



Characteristic shoot, leaf and bunch stunting caused by Eutypa

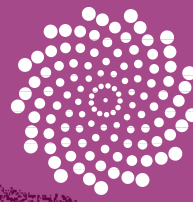


Characteristic wedge wood stain caused by Eutypa infection

### Living Barrier for long lasting benefits

- Vinevax gives a fast acting protective barrier
- Acts as a living guard even after 12 months
- Effective, convenient and safe spray formula for all pruning wounds

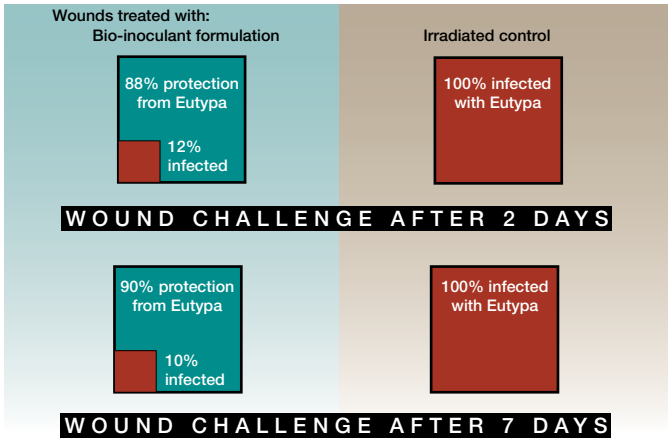
**Living barrier wound-dressing for vines**



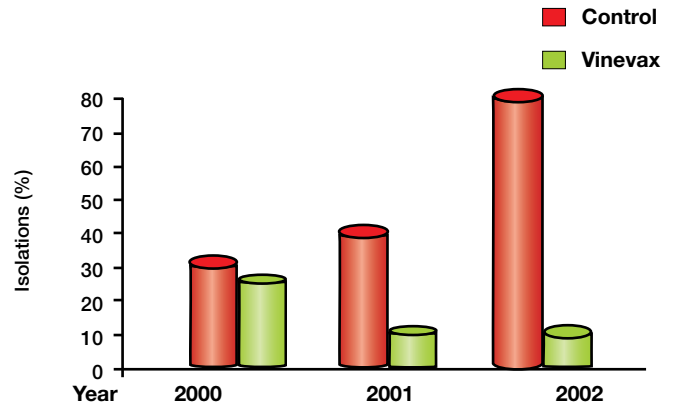
## AUSTRALIA

### EUTYPA SIGNIFICANTLY REDUCED WITH VINEVAX

RE-ISOLATION OF EUTYPA FOLLOWING WOUND CHALLENGE WITH 500\* LIVE EUTYPA SPORES AFTER 2 OR 7 DAYS



RE-ISOLATION OF EUTYPA FOLLOWING WOUND CHALLENGE WITH 500\* LIVE EUTYPA SPORES 1 DAY AFTER VINEVAX

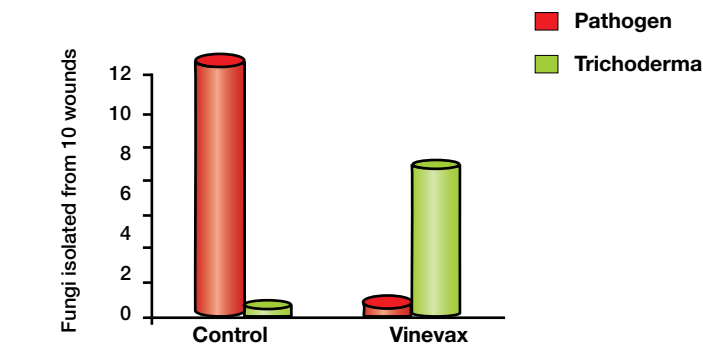


S. John, et al. University of Adelaide

## NEW ZEALAND

### PATHOGENS SIGNIFICANTLY REDUCED WITH VINEVAX

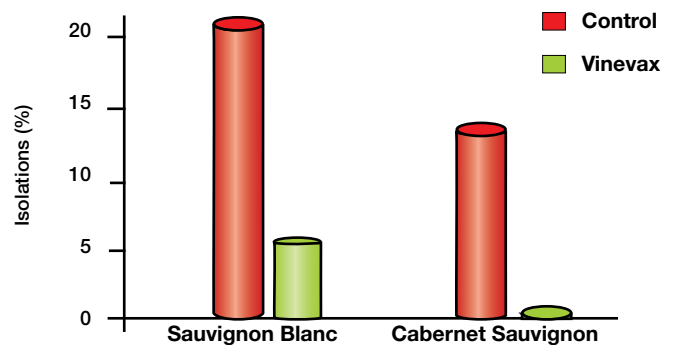
INCIDENCE OF PRUNING WOUND FUNGI ISOLATED 8 MONTHS AFTER VINEVAX.



I. Harvey, Plantwise Lincoln

## SOUTH AFRICA

INCIDENCE OF PRUNING WOUND PATHOGENS ISOLATED 8 MONTHS AFTER VINEVAX.

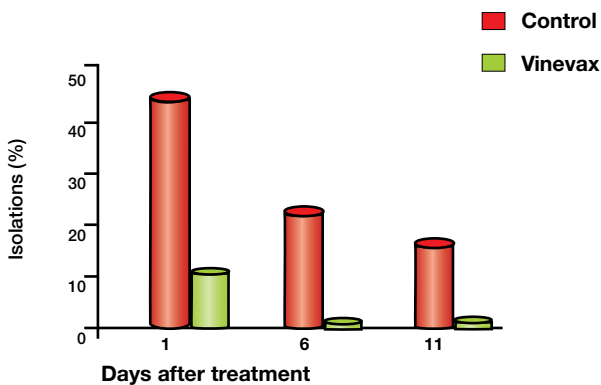


F. Halleen, ARC, Stellenbosch, J. Lombard, Kelp Products, Simonstown

## USA

### EUTYPA SIGNIFICANTLY REDUCED WITH VINEVAX

RE-ISOLATION OF EUTYPA FOLLOWING WOUND CHALLENGE WITH 1000\* LIVE EUTYPA SPORES AFTER 1, 6 OR 11 DAYS

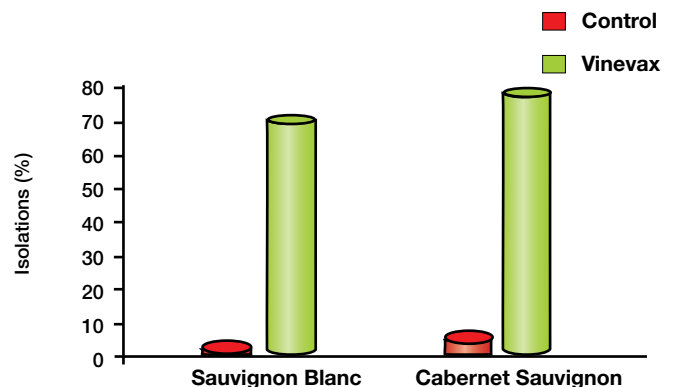


P. Rolshausen et al. University of California

## SOUTH AFRICA

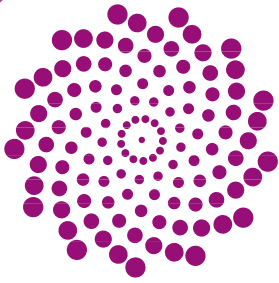
### LONG-LASTING VINEVAX BIO-INOCULANT

INCIDENCE OF VINEVAX BIO-INOCULANT ISOLATED AT 8 MONTHS.



F. Halleen, ARC, Stellenbosch, J. Lombard, Kelp Products, Simonstown

\*An artificially high inoculum level was used in these experiments to ensure high levels of infection in the controls. Under natural conditions pruning wounds are unlikely to receive more than 10 - 100\* spores. Carter, M. V. 1991. The status of Eutypa lata as a pathogen. Int. Mycol. Inst. Phytopathol. Pap. 32. Ramos, D. E. et al. 1975. Production and dispersal of ascospores of Eutypa armeniaceae in California. Phytopathol. 65: 1364 - 1371.



# vinevax™

## Pruning wound dressing



**Mixing and Spray Application:** Mix Vinevax with clean water at the rate of 10 grams per litre. Pre-mix Vinevax by carefully adding 100g to 200ml of water in a clean container, stir to a uniform consistency and then make up to 10 litres with clean water. Mix regularly during use to ensure no settling. Apply liberally to all pruning cuts and wind damage breaks from a knapsack pressure unit or hand-operated trigger spray.

Crop	Procedure	Application & Rate	Timing	Critical Comments
Grape	Annual cane and spur pruning - wound size up to 20mm	Spray Vinevax at 10g / litre	APPLY AT THE END OF THE DAY OR 5 - 15 HOURS AFTER PRUNING.	IN DAMP CONDITIONS APPLY IMMEDIATELY AFTER CUTTING.
	Major reconstruction - wound size 20 - 50mm	Brush-on Vinevax at 100g / litre		

**COMPATIBILITY** – Ensure there is a 48hr period between application and use of fungicides

**Mixing and Brush-on paste Application:** Mix Vinevax with clean water at the rate of 100g per litre. Pre-mix Vinevax by carefully adding 100g to 200ml of water in a clean container, stir to a uniform consistency and then make up to 1 litre with clean water. A measuring spoon is provided for making smaller quantities – see label for details.

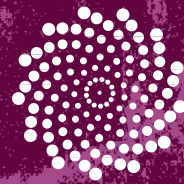
**Pack size:** Available in 100g or 1000g packs

Always read label before use

Available from all good Horticultural Resellers

## Living barrier protection for all pruning wounds

### PARTNER PRODUCT



## vinevax™

### BIO-DOWEL IMPLANT



The incidence of Eutypa can be significantly reduced with the annual use of Vinevax pruning wound dressing. However, Eutypa has evolved to live in and on woody tissue and its natural incidence in many vineyards and orchards can be significant. Existing disease should be controlled by the use of Vinevax Bio-Dowel Implants. The endophyte / immunizing commensal properties of the Bio-Dowel vaccinates and protects the vine against Eutypa and leads to improved health and vigour. Vines with Eutypa leaf / bunch symptoms and the characteristic wood lesion (see pictures on page 2) or asymptomatic Eutypa (poorly performing blocks) will benefit from the application of Bio-Dowel Implants. Annual use of the pruning wound dressing on vines also generates a long-term bio-inoculant build up for healthy vines.

[www.agrimm.co.nz](http://www.agrimm.co.nz)



Manufactured & Registered by  
Agrimm Technologies Ltd  
487 Tancred's Rd, Lincoln, New Zealand

# Agrimm®

For more information contact:  
Alistair Pullin 021 590 329 • Freephone: 0800 42 47 46

